

Aldreds
Estate Agents



Flat 7, Dexlyn Court 8-9 Norfolk Square

, Great Yarmouth, NR30 1EL

Guide Price £130,000 - £140,000



Flat 7, Dexlyn Court 8-9 Norfolk Square

, Great Yarmouth, NR30 1EL

GUIDE PRICE £130,000-£135,000 Aldreds are pleased to offer this attractively presented, first floor apartment in this attractive converted building which provides views over the Norfolk Square and is situated yards from the sea front. The property has been well maintained and offers a roomy layout of accommodation comprising a common entrance hall, entrance hall, open plan living room in to the kitchen with an offset utility room and storage cupboard, two double bedrooms both with en-suite shower rooms. Outside there is allocated parking and to the rear use of the delightful Norfolk Square gardens. The property also benefits from double glazed windows, electric central heating and is offered chain free.

Common Entrance Hall

Security entry phone system, stairs to first floor.

Entrance Hall

Entrance door, radiator, open access to:

Kitchen

11'7" x 9'10" (3.54 x 3.01)

Fitted cream shaker style units with wall and matching base units with granite effect work surfaces over, breakfast bar divider, built in electric double oven, four ring ceramic hob, single drainer black cast sink with mixer taps, part metro tiled walls, deep walk in storage cupboard and open plan access to:

Living Room

17'3" x 13'9" (5.26 x 4.21)

Including the chimney breast, double glazed window to rear providing views over the Norfolk Square, radiator, tv point.

Utility Room

7'3" x 6'0" (2.23 x 1.85)

Space and plumbing for a washing machine, pressurised hot water cylinder and electric boiler system.

Bedroom 1

13'8" x 9'10" maximum (4.17 x 3.02 maximum)

Double glazed window to front aspect, two radiators, door to:

En-Suite Shower Room

Full width tiled shower cubicle with mains fed shower fitting, low level wc, pedestal wash basin, extractor fan, towel rail/radiator.

Bedroom 2

10'11" x 10'2" (3.34 x 3.12)

Two double glazed windows to side aspect, radiator, door to:





En-Suite Shower Room

corner quadrant tiled shower cubicle with mains fed shower fitting, low level wc, pedestal wash basin, towel rail/radiator, extractor fan.

Outside

To the front of the property is an allocated car parking space and to the rear beyond the bin store area is access on to the beautiful Norfolk Square gardens which are available for use by the residents of Dexlyn Court.

Tenure

Leasehold - 125 year lease from 1 January 2012.

Annual Service charge payable of £935.99 payable half yearly with a ground rent of £250 per annum.

Council Tax

Great Yarmouth Borough Council - Band 'A'

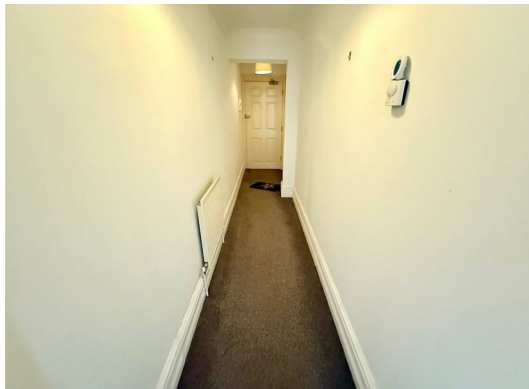
Location

Great Yarmouth is the largest resort on the East Norfolk coast with its Historic Market Place and varied selection of shops. The town has a busy port and the rivers Yare and Bure give access to the Norfolk Broads. There are Museums * Race Course * Greyhound Stadium * Schools for all ages * District Hospital approximately 5 miles south. Bus and rail services connect with Norwich.

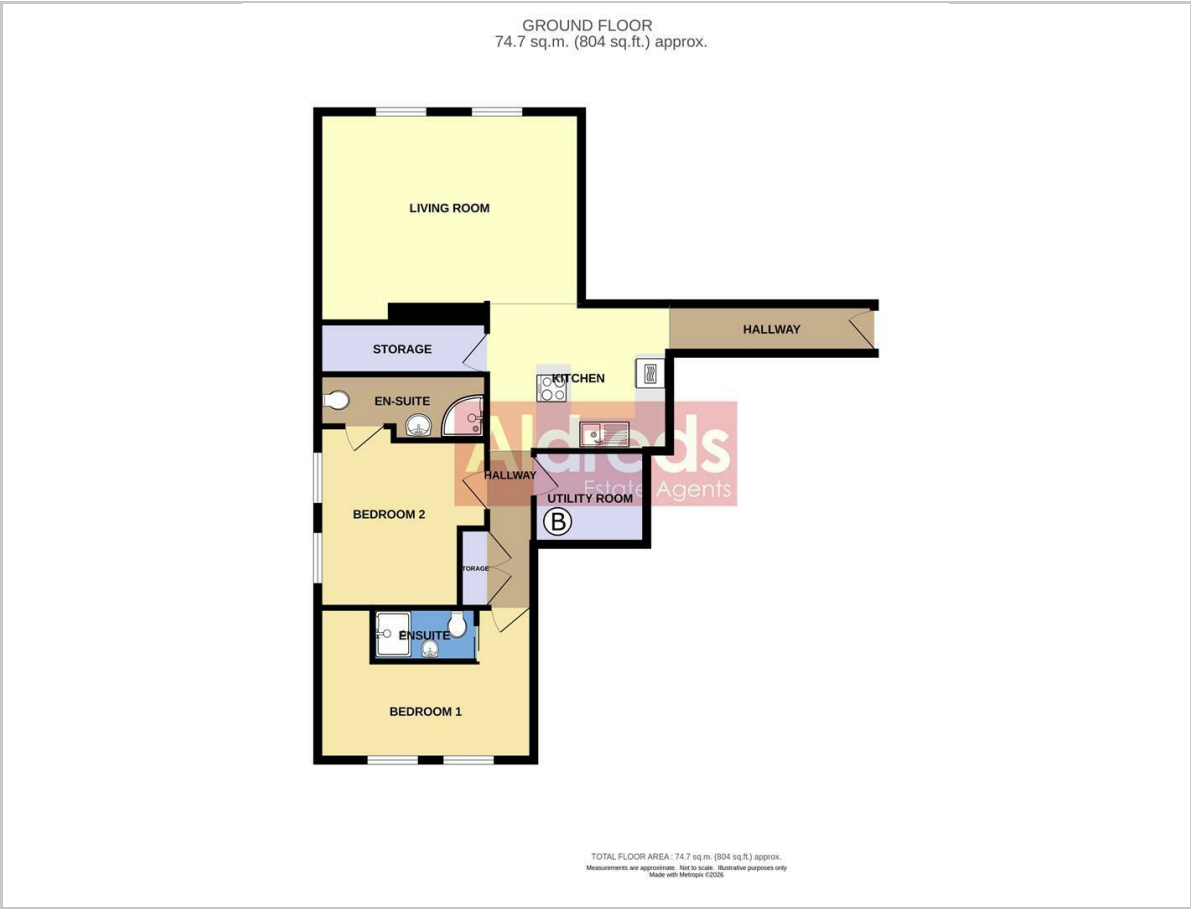
Directions

From the Yarmouth office head north along North Quay, at the roundabout turn right into Fullers Hill, continue over the traffic lights, at the next set of traffic lights with Sainsbury's turn left into St Nicholas Road, continue over the next set of traffic lights into Euston Road, turn left into Wellesley Road where the property can be found on the right hand side on the corner of Norfolk Square and Wellesley Road.

Y12617



Floor Plan

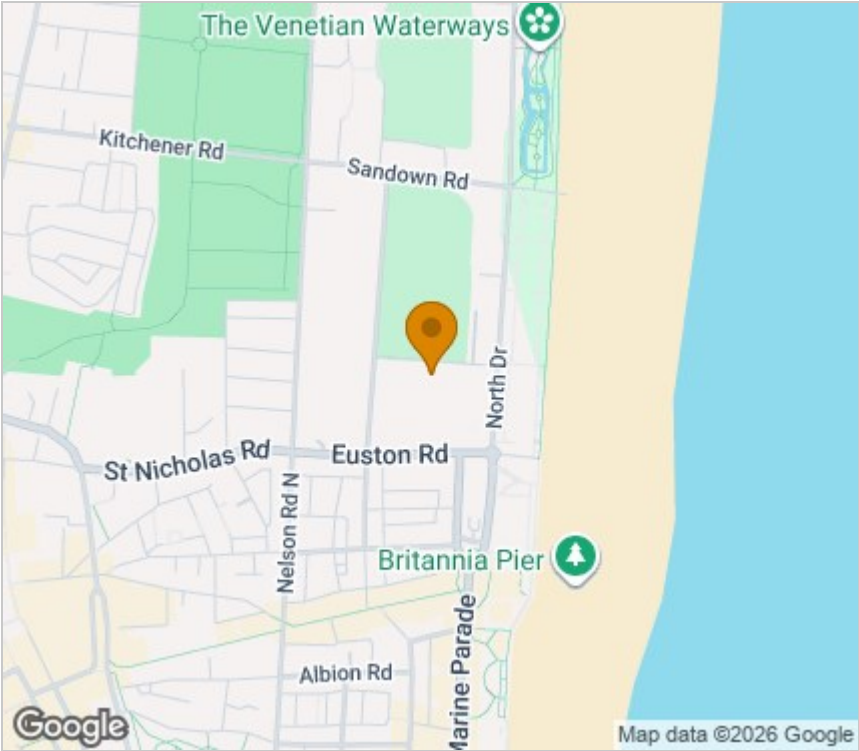


Viewing

Please contact our Aldreds Great Yarmouth Office on 01493 844891 if you wish to arrange a viewing appointment for this property or require further information.

Disclaimer
These particulars are issued on an understanding that all negotiations shall be conducted through Messrs. Aldreds. Please note: Messrs. Aldreds for themselves and for the vendors or lessors of this property whose agents they are given notice that: 1. Particulars are set out as a general outline only for guidance of intending purchasers or lessees, and do not constitute nor constitute part of, an offer or contract. 2. All descriptions, dimensions, references to condition and necessary permissions for use and occupation, and other details are given without responsibility and any intending purchasers or tenants should not rely on them as statements or representations of fact but must satisfy themselves by inspection or otherwise as to the correctness of each of them. 3. No person in the employment of Messrs. Aldreds has any authority to make or give any representation or warranty whatever in relation to this property. 4. If you are proposing to visit the property and are travelling some distance please check with Aldreds on the issue of availability prior to travelling. 5. Aldreds Property Consultants and associated services may offer additional services to the prospective purchaser for which they will be entitled to receive a commission. Aldreds are pleased to be working with Mortgage Advice Bureau. They're an award-winning mortgage broker with over 1,400 advisers across the UK, and have access to over 12,000 mortgage products from over 90 lenders. Aldreds Estate Agents Ltd receive a commission of £200 on each completed case. Your home may be repossessed if you do not keep up repayments on your mortgage. There may be a fee for mortgage advice. The actual amount you pay will depend upon your circumstances. The fee is up to 1%, but a typical fee is 0.3% of the amount borrowed. Mortgage Advice Bureau is a trading name of Mortgage Seeker Limited which is an appointed representative of Mortgage Advice Bureau Limited and Mortgage Advice Bureau (Derby) Limited which are authorised and regulated by the Financial Conduct Authority. Mortgage Seeker Limited Registered Office: Lovewell Blake, Sixty Six North Quay, Great Yarmouth, Norfolk, NR30 1HE. Registered in England Number: 03721415. 6. Potential purchasers should check with their providers that the broadband and mobile phone coverage they would require is available.

Area Map



Energy Efficiency Graph

